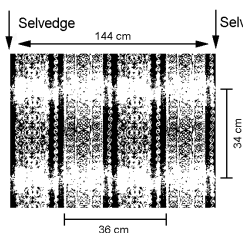
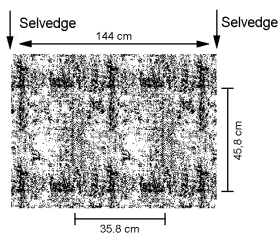


## CAMELOT

|   | Arthur                                   | Merlin                                   | Percival                                 | Saxon                                    |
|---|--|--|--|--|
| Width / Szerokość   | 144cm - 56 <sup>2</sup> / <sub>5</sub> " | 144cm - 56 <sup>2</sup> / <sub>5</sub> " | 143cm - 56 <sup>1</sup> / <sub>4</sub> " | 144cm - 56 <sup>2</sup> / <sub>5</sub> " |
| Composition / Skład   | 100% Polyester                           | 100% Polyester                           | 100% Polyester                           | 50% Acrylic<br>50% Polyester             |
| Vertical repeat /<br>Pionowe powtórzenie  | 34cm-13 <sup>1</sup> / <sub>8</sub> "    | 45.8cm-18"                               | plain                                    | plain                                    |
| Horizontal repeat /<br>Poziome powtórzenie  | 36cm-14 <sup>1</sup> / <sub>8</sub> "    | 35.8cm-14"                               | plain                                    | plain                                    |
| Martindale  | 20 000 Rubs                              | 20 000 Rubs                              | 60 000 Rubs                              | 50 000 Rubs                              |
| Wyzenbeek   | 35 000 Double Rubs<br>(Cotton duck)      | 80 000 Double Rubs<br>(Cotton duck)      | 80 000 Double Rubs<br>(Cotton duck)      | 110 000 Double Rubs<br>(Cotton duck)     |
| USA NFPA 260 Class I<br>(UFAC)  | Pass                                     | Pass                                     | Pass                                     | Pass                                     |
| CAL 117/SE  | Pass                                     | Pass                                     | Pass                                     | Pass                                     |
| MVSS 302  | Pass                                     | Pass                                     | Pass                                     | Pass                                     |
| BS 5852 source 0  | Pass                                     | Pass                                     | Pass                                     | Pass                                     |
| Care Instructions /<br>Czyszczenie  |  |  |  |  |
| Usage / Zastosowanie  |  |  |  |  |
| <p>Colour shades may slightly vary from dye-lot to dye-lot<br/>Dopuszcza się występowanie różnych odcieni pomiędzy poszczególnymi partiami produkcyjnymi.</p> |  |  |  |  |



ARTHUR



MERLIN